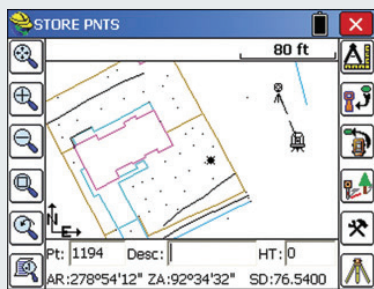


FAST Survey Field Software

Datasheet



Powerful Data Collection



New FAST Survey has more:

- Supported Instruments
- Supported File Formats
- Supported Languages

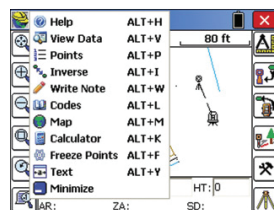
FAST Survey Field Software

The FAST Survey™ field software combines advanced functionality, ease-of-use, and sheer capability in a very powerful data collection software suite. FAST Survey is a complete data collection system for Real Time Kinematic (RTK) GNSS and Total Stations with in-field coordinate geometry. It has been designed to optimize the functionality, performance and control of the Spectra Precision instruments for topography and construction applications. FAST Survey supports a wide range of popular and newly released RTK GNSS receivers and conventional/robotic total stations.



Easy Data Collection

Tab-Based MENU Structure. All commands are visible in each menu, preventing the need for Up-Down Arrow Keying to view options. Collect points in the graphics mode. Points plot as they are shot in the field or entered. There is no need to switch between screens to view your points.

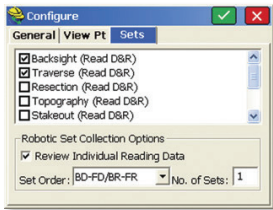


Enhanced Graphics

FAST Survey has a new colorful look. Icons have been standardized to create continuity throughout the product, while modernizing the user experience. The new Hot List lets users jump to the FAST Survey routines that previously had shortcuts without having to memorize key strokes. It also provides shortcut functionality to devices without keyboards.

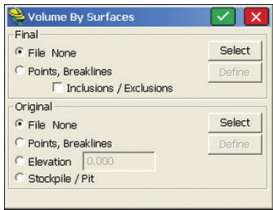


Powerful data collection with FAST Survey



Settings and Control

FAST Survey manages job and antenna settings, network connections, as well as radio configurations. It supports the complete range of Spectra Precision instruments as well as popular survey equipment from other manufacturers. FAST Survey keeps track of every device completely separately. This includes all base stations, rovers and total stations, so that mixing equipment is easy.

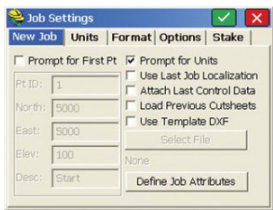


Volumes Computation

FAST Survey can compute volumes between two surfaces, one surface and an elevation or simple stockpile volumes. Surfaces can be defined by graphical entities and points or by TIN files.

GPS Networks

FAST Survey supports all common GNSS network protocols, such as NTRIP, TCP and UDP. FAST Survey manages all settings needed for network connection and offers automatic reconnection to a previous network.



Job Settings

FAST Survey has the option to use a template DXF file for new jobs so that all layers and colors are automatically created per your company standard.

It has the option to auto-load cutsheets and control files from the previous job for those users that work on one site continuously.

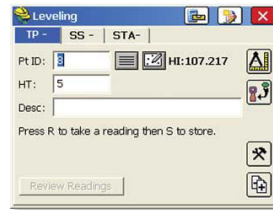
FAST Survey has the ability to turn off the auto-descriptions in stakeout and completely customize how all stakeout routines behave.

Point Number by Interval – FAST Survey can interval the point ID by using the “Add to Next Pt ID” option. To number all points on the odd numbers, start at 1 and use 2 in this field.



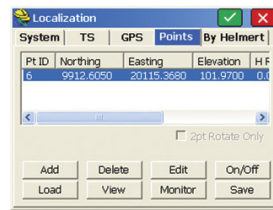
Instrument Switching

The instrument icon has been enhanced to allow you to switch between your surveying instruments. Simply configure your gear once and forget it.



Leveling

FAST Survey can be used to collect trigonometric level loops and digital level loops. Loops can be processed and adjusted on the device and all existing project coordinate points can be updated.



Localization

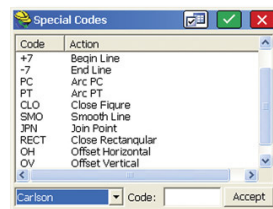
The software supports an unlimited number of localization points. All project scale settings and coordinate system options have been centrally located in the localization dialog.

Angle Sets in Store Points

FAST Survey allows users to “Configure” how each reading is measured with regard to direct and reverse options (formerly known as SS/Trav). If direct and reverse readings are taken at the backsight, then any direct and reverse foresight will be considered an angle set and will be reduced accordingly. This eliminates the need to use a separate routine for angle sets.

Reference Alignments

FAST Survey supports associating a reference alignment for station reporting. This allows the user to stake a 3' offset to a curb line that is not parallel to the CL of the road, stop at all critical curb stake locations and have the station be reported based on the CL alignment.



Feature Coding

FAST Survey can collect parallel lines using the offset horizontal and offset vertical line drawing commands and close a rectangle by three points using the rectangle command. In the settings section of Special Codes, the user can even auto compute and store the additional points at the line vertices that were created by the software. FAST Survey allows the user to code in numerous coding styles that may be defined by their office package.

Skew Angle Staking

FAST Survey supports staking offsets on a skew angle and provides the option to stake offset intersections and bisectors at angle points and the radius or PI point of an arc without leaving the Stake Line/Arc routine.

Contact Information:

AMERICAS

Spectra Precision Division
10368 Westmoor Drive
Westminster, CO 80021, USA
+1-720-587-4700 Phone
888-477-7516 (Toll Free in USA)

EUROPE, MIDDLE EAST AND AFRICA

Spectra Precision Division
Rue Thomas Edison
ZAC de la Fleuriaye - CS 60433
44474 Carquefou (Nantes), France
+33 (0)2 28 09 38 00 Phone

ASIA-PACIFIC

Spectra Precision Division
80 Marine Parade Road
#22-06, Parkway Parade
Singapore 449269, Singapore
+65-6348-2212 Phone



www.spectraprecision.com